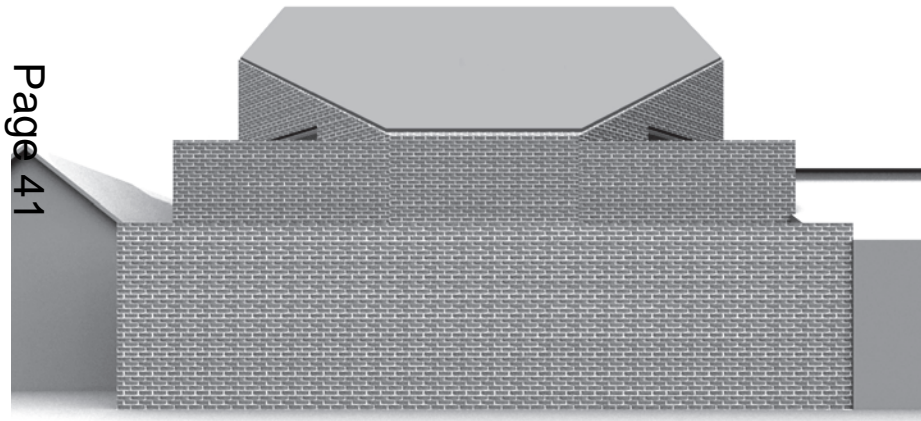
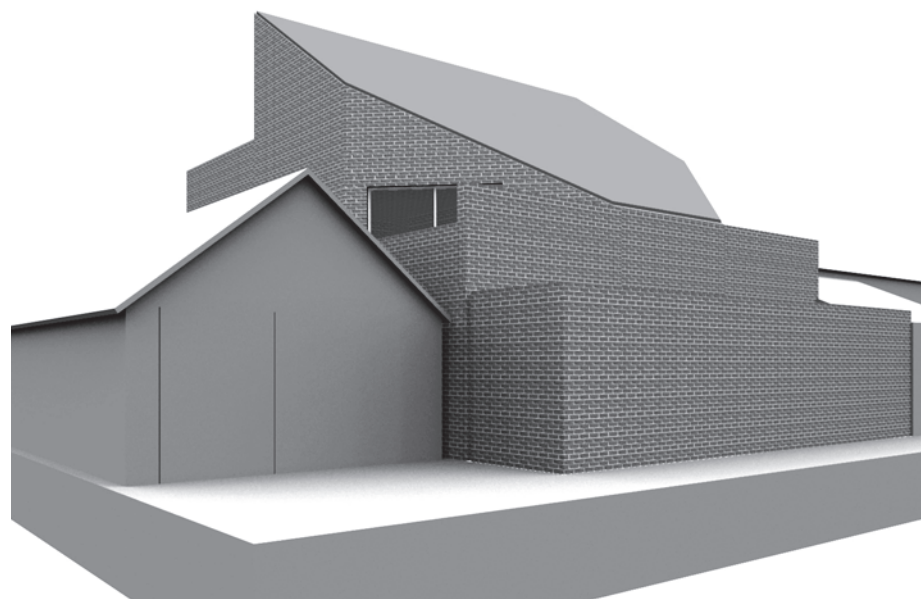




Front elevation seen from Beulah Road showing effect of setback and chamfered corners at second floor



Rear elevation from gardens to Graham Road showing effect of setbacks, roof raking away from boundary and chamfered corners at first floor

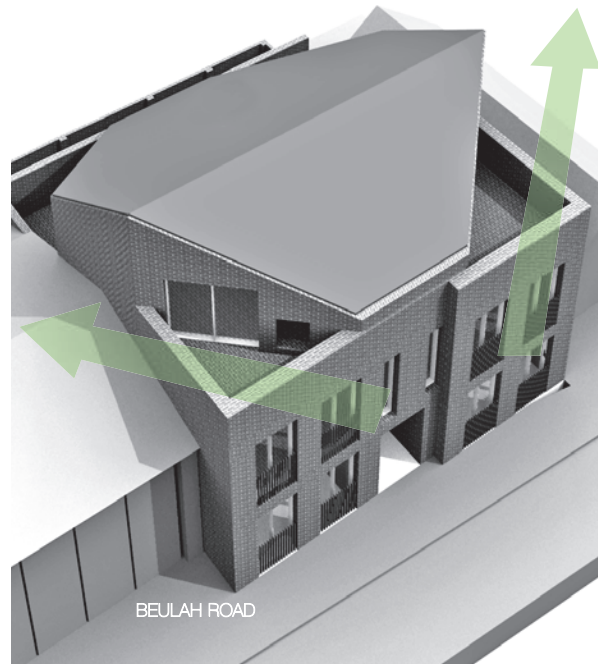


Rear elevation from Gardens to Graham Road showing effect 45 degree oblique open views from first floor terrace to avoid overlooking

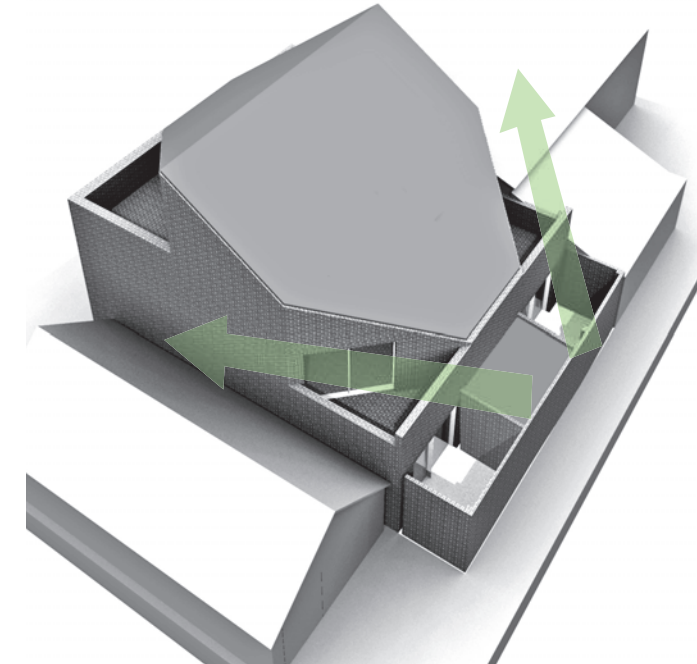


View looking south down Beulah Road

Effect of setbacks, roof raking away from boundary and chamfered corners at second floor - helps to open out the feeling of space and reduce the building bulk



Effect of setbacks, roof raking away from boundary and chamfered corners at first floor - helps to open out the feeling of space and reduce the building bulk



Notes

All dimensions to be verified on site by the contractor and all discrepancies or omissions must be reported to the Architect immediately. This drawing is the property of Terry Pawson Architects. Copyright reserved. DO NOT SCALE.

This drawing has been prepared based on survey information provided by others and should not be relied upon for accuracy. It is the responsibility of each trade contractor to take adequate on site levels and measurements prior to preparation of shop drawings manufacture of equipment components fabrication construction and installation.

Revision

Terry Pawson Architects

50 Westminsterbridge Road  
 tpa@terrypawson.com  
 www.terrypawson.com

T: 020 - 8543 2577  
 client: Greycross Ltd  
 job: 42 Beulah Road  
 London SW19 3SB

drawing title: Massing & street view

ref: 207	stage: P	no: 0003	revision:
title: PLANNING APPLICATION			
date: 22/08/14		scale: NTS	

This page is intentionally left blank